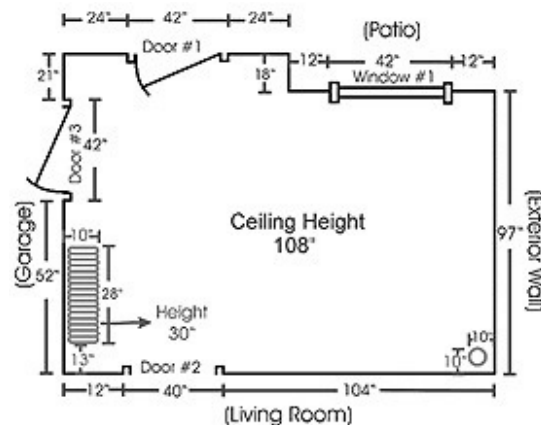


How to Measure for your Kitchen and provide the best pre-liminary information:

NOTE: All of your measurements should be in inches. For example, if you measure a wall that is 10 feet, write it as 120"

STEP 1

Draw a rough outline of your kitchen. Use the following symbols in your drawing for doors and windows.



NOTE: For doorways with doors, draw the doorway according to which way the door swings. Measure from the outside of the trim on one side to the outside of the trim on the other side.

STEP 2

A) Beginning at the top left corner of your drawing measure to the first window, door, or wall (Label 1,2,3). Continue clockwise around the room until each wall, window and door has been measured.

B) Measure the ceiling height. Ceiling heights, even in the same room, can sometimes vary by as much as a few inches so it is best to measure in a couple places.

C) Measure from the floor to the bottom of each window and also measure the overall window height.

STEP 3.

Next to each wall, write the name of the adjacent room. If the wall is an "outside wall" write "exterior wall."

STEP 5

Measure any obstructions such as radiators, pipes, etc. that you either can not, or do not, want moved.

FINAL STEP

Check your measurements by adding up the measurements to make sure they match (or are at least very close).

Photos to provide

Please provide photo images of:

1. Each wall, obstruction (radiator, floor vent, ceiling vent) and under sink base for plumbing considerations
2. Silver label showing model # of any appliances staying
3. Furniture pieces staying (and give measurements)
4. Overall adjacent rooms to the kitchen for design flow and consideration
5. Inspiration photos



RENDERED HOMES
YOUR VISION BY DESIGN